

**MANUFACTURING FACILITY
@ OAKS BUSINESS PARK**

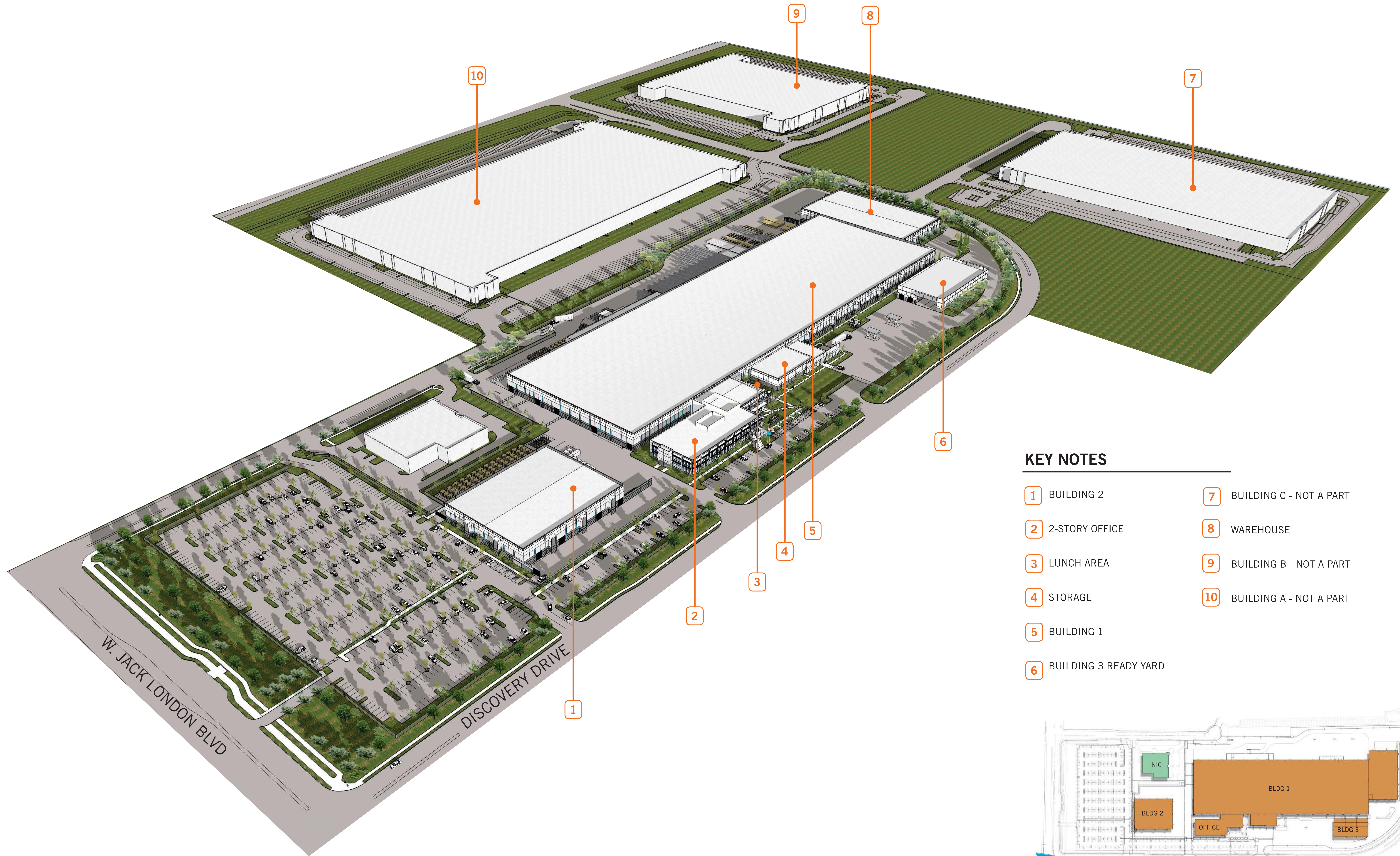
LIVERMORE, CALIFORNIA

SNR14-0029-00
DESIGN REVIEW
12.12.2014

WARE MALCOMB

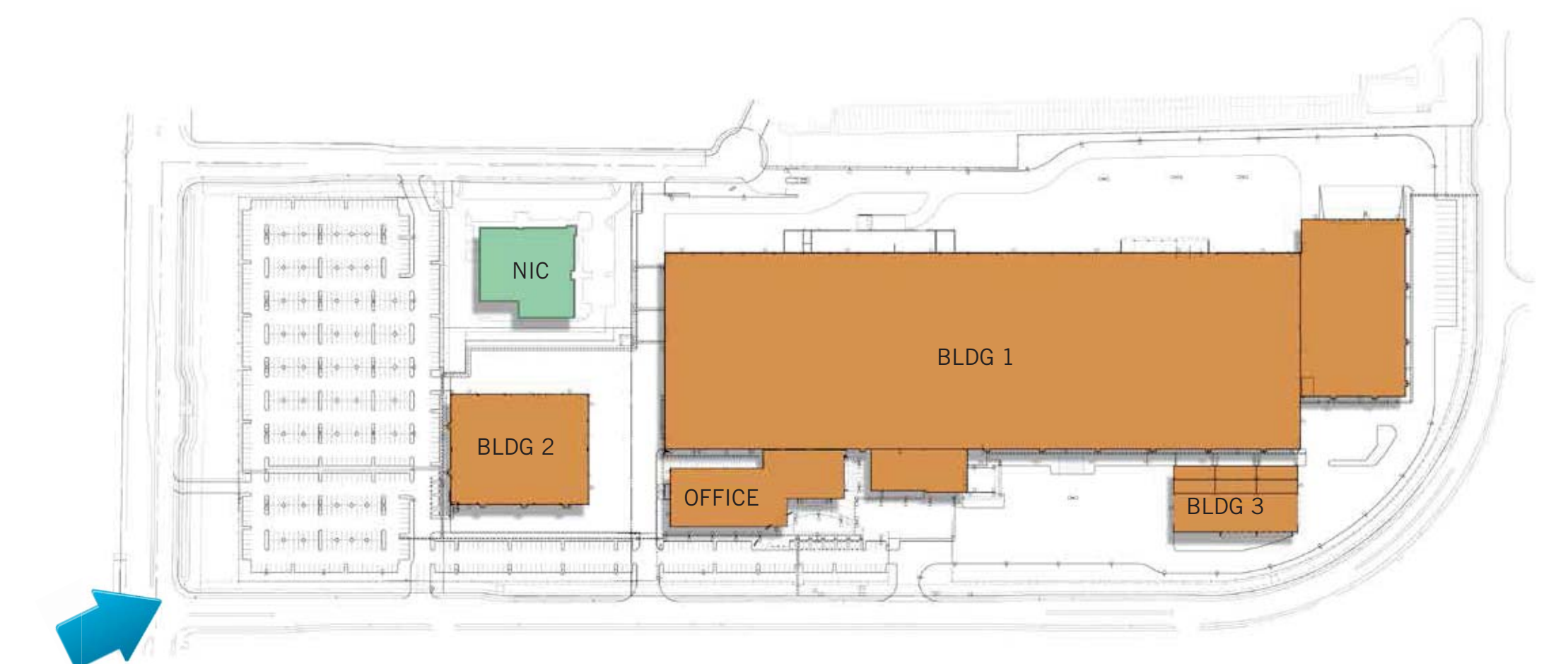
architecture | planning | interiors

graphics | civil engineering



KEY NOTES

- | | |
|-------------------------|----------------------------|
| 1 BUILDING 2 | 7 BUILDING C - NOT A PART |
| 2 2-STORY OFFICE | 8 WAREHOUSE |
| 3 LUNCH AREA | 9 BUILDING B - NOT A PART |
| 4 STORAGE | 10 BUILDING A - NOT A PART |
| 5 BUILDING 1 | |
| 6 BUILDING 3 READY YARD | |



Key Plan

SITE BIRD'S EYE VIEW

MANUFACTURING FACILITY AT OAKS BUSINESS PARK

WARE MALCOMB

SNR14-0029-00
12.12.2014

SHEET
1

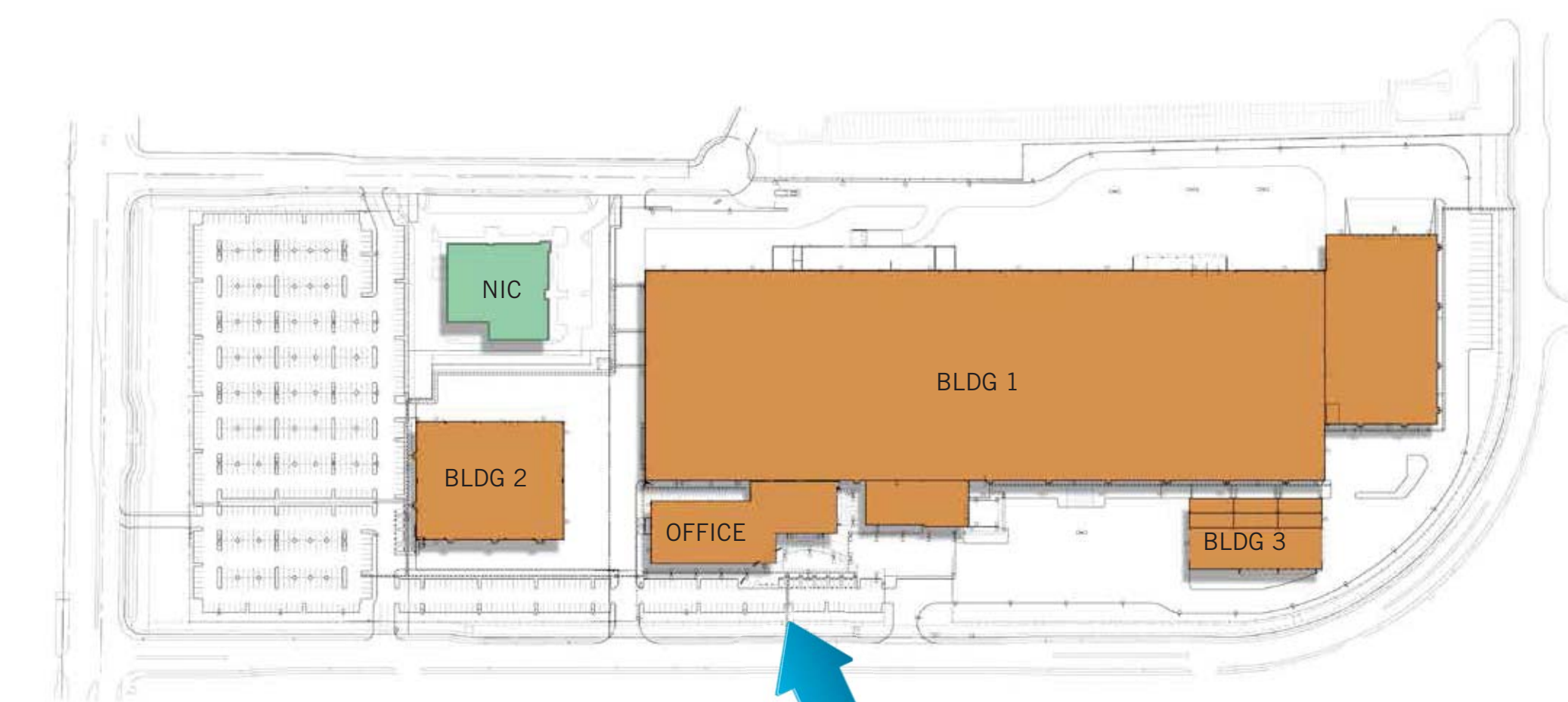


KEY NOTES

- 1 FLAG POLES AT ENTRY
- 2 BIOSWALE
- 3 NEW WROUGHT-IRON FENCE WITH DECORATIVE CONCRETE COLUMNS
- 4 DECORATIVE METAL TRELLIS
- 5 BALCONY
- 6 TILT UP CONCRETE PANEL
- 7 OFFICE ENTRANCE
- 8 CURTAIN WALL AT ENTRANCE
- 9 LUNCH AREA



Partial West Elevation



Key Plan

MAIN ENTRANCE / OFFICE AREA

MANUFACTURING FACILITY AT OAKS BUSINESS PARK

WARE MALCOMB

SNR14-0029-00
12.12.2014

SHEET
2

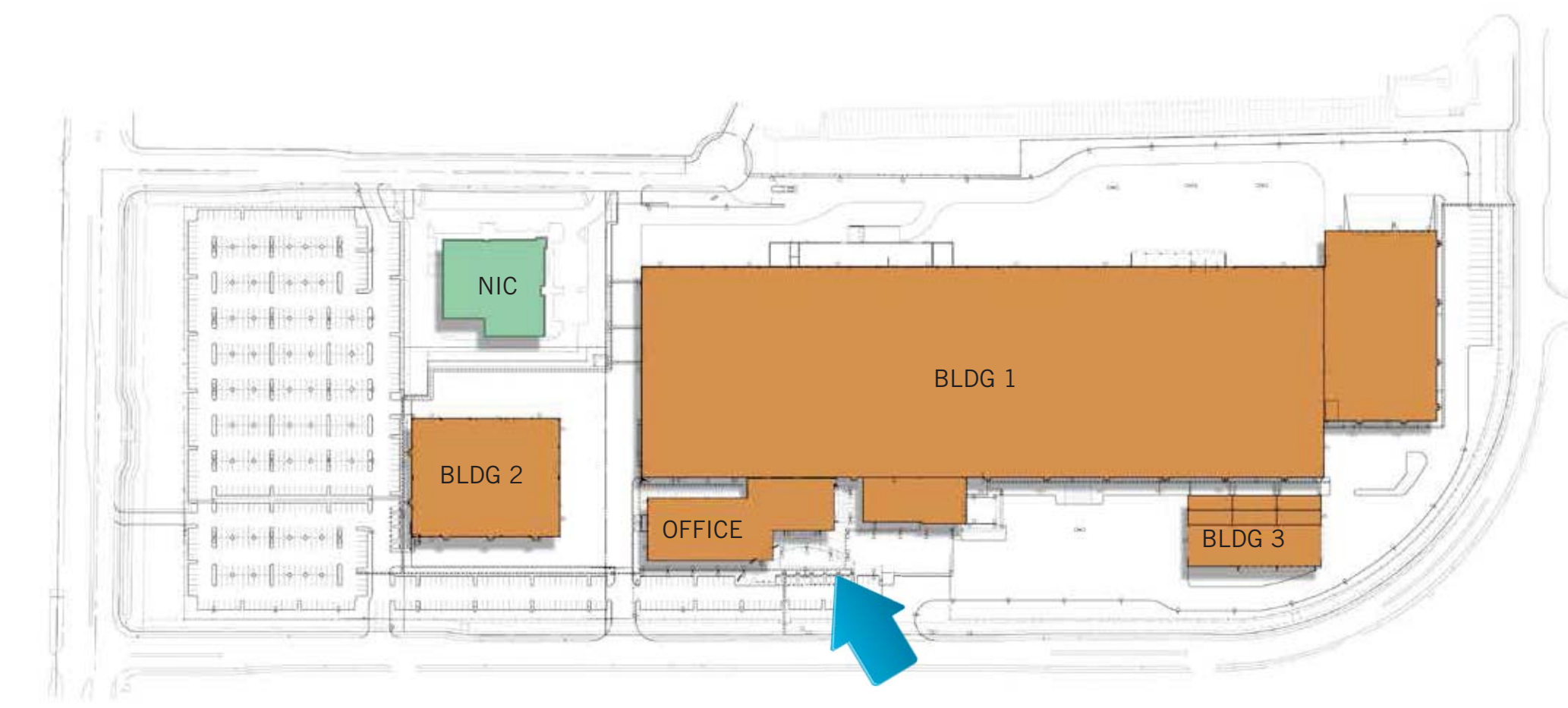


KEY NOTES

- 1 OFFICE ENTRANCE
- 2 PROPOSED ART FEATURE
- 3 ACCESSIBLE PARKING STALLS
- 4 WATER QUALITY BIO SWALE
- 5 BALCONY
- 6 LUNCH/ BREAK AREA
- 7 LED LIGHT FIXTURE



Partial West Elevation



Key Plan

BALCONY, LUNCH/ BREAK AREA

MANUFACTURING FACILITY AT OAKS BUSINESS PARK

WARE MALCOMB

SNR14-0029-00
12.12.2014

SHEET
3

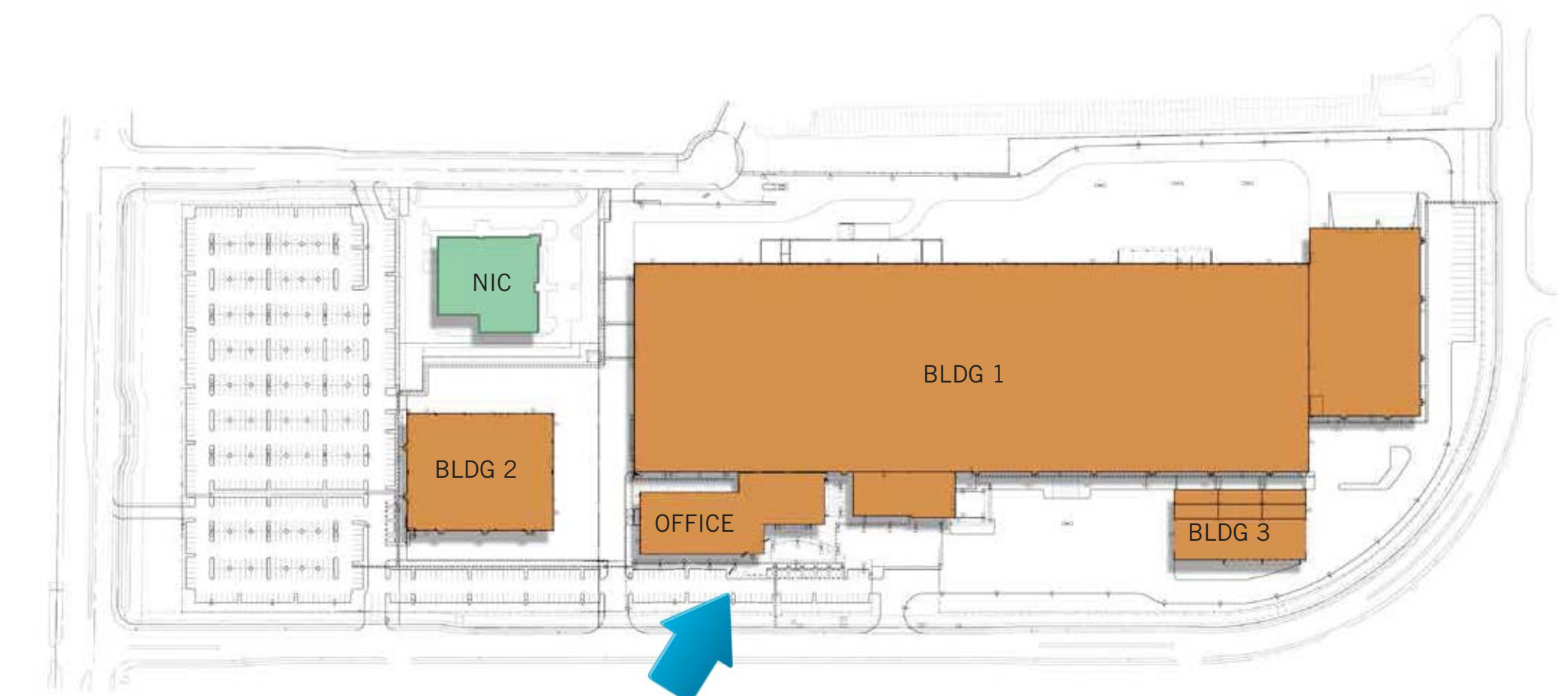


KEY NOTES

- 1 CONCRETE TILT UP PANEL
- 2 SHADE CANOPY
- 3 STOREFONT SYSTEM
- 4 SPANDREL GLASS
- 5 HIGH PERFORMANCE GLAZING
- 6 OFFICE ENTRANCE
- 7 CURTIAN WALL SYSTEM
- 8 STORAGE BUILDING



Partial West Elevation



Key Plan

OFFICE ENTRANCE

MANUFACTURING FACILITY AT OAKS BUSINESS PARK

WARE MALCOMB

SNR14-0029-00
12.12.2014

SHEET
4



1

2

3

4

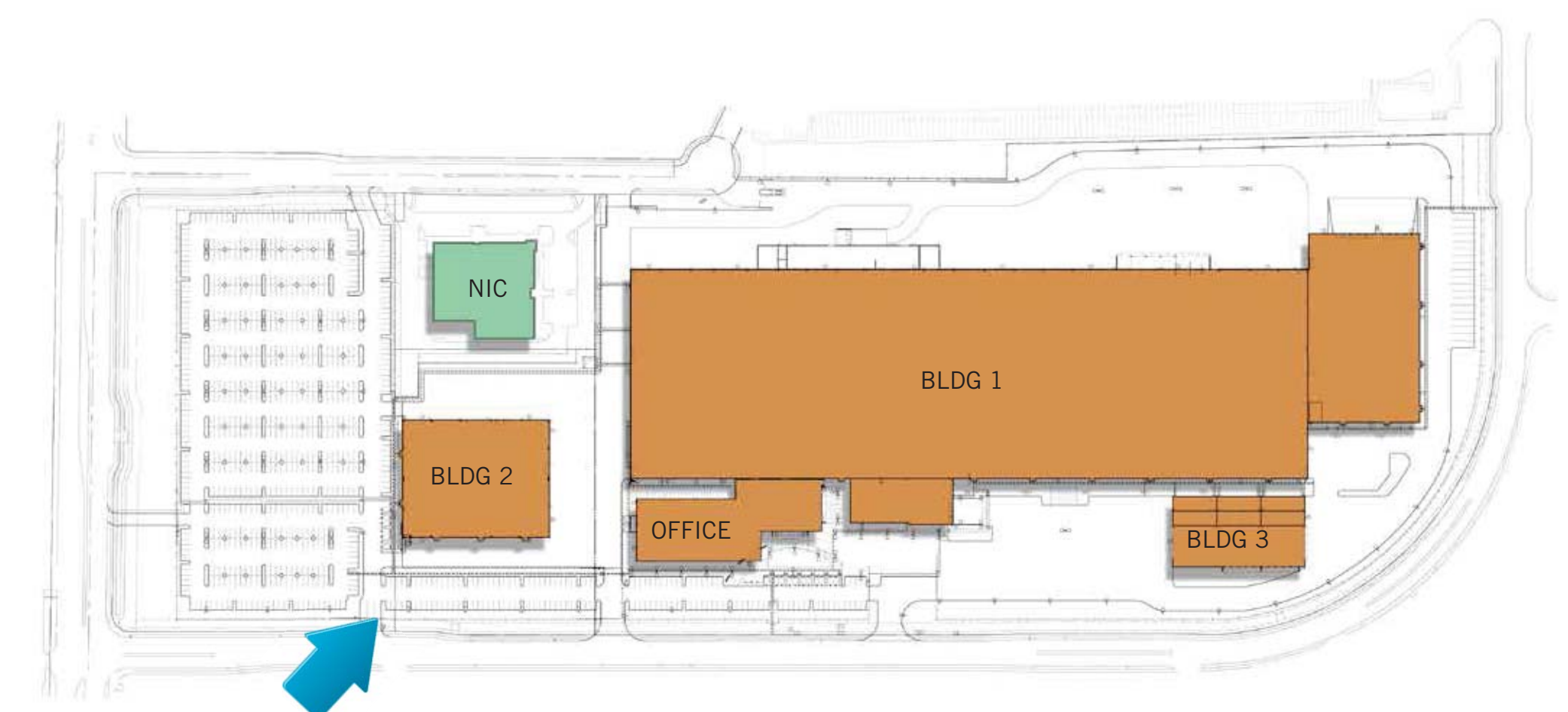
5

KEY NOTES

- 1 CONCRETE BLOCK COLUMN
- 2 CONCRETE TILT UP PANEL
- 3 ROLL UP DOOR
- 4 LOUVERED VENT
- 5 WROUGHT IRON FENCE



Building 2 North Elevation



Key Plan

SITE ENTRANCE AT DISCOVERY DRIVE

MANUFACTURING FACILITY AT OAKS BUSINESS PARK

WARE MALCOMB

SNR14-0029-00
12.12.2014

SHEET
5

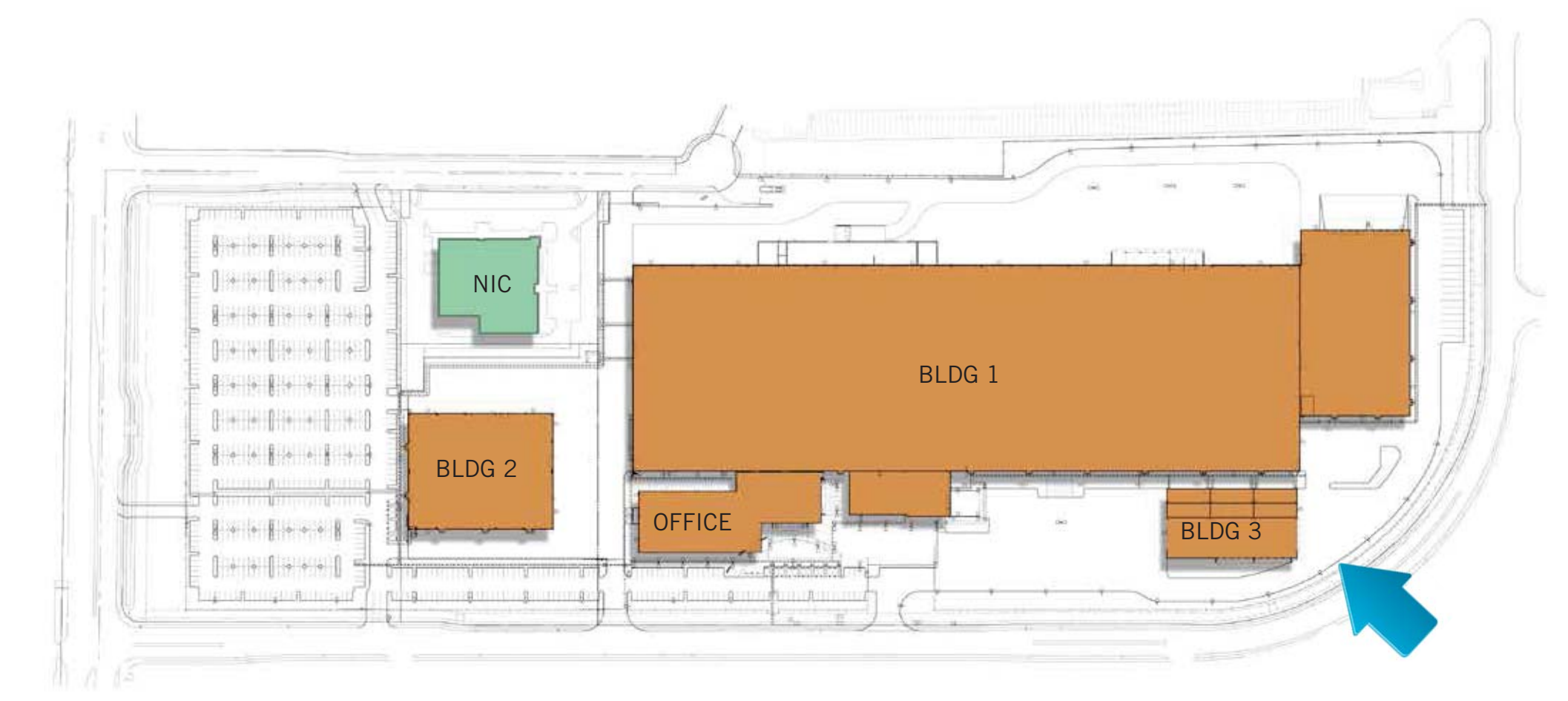


KEY NOTES

- 1 BUILDING 3 READY ROW
- 2 FINAL INSPECTION OFFICES
- 3 TILT UP CONCRETE PANEL
- 4 CONCRETE BLOCK COLUMN
- 5 WROUGHT IRON FENCE
- 6 ROLL UP DOOR



Partial West Elevation



Key Plan



KEY NOTES

- 1 TILT UP CONCRETE PANEL
- 2 CONCRETE BLOCK COLUMN
- 3 WROUGHT IRON FENCE
- 4 VENTILATION LOUVER
- 5 MAN DOOR
- 6 LANDSCAPE BERM



South Elevation

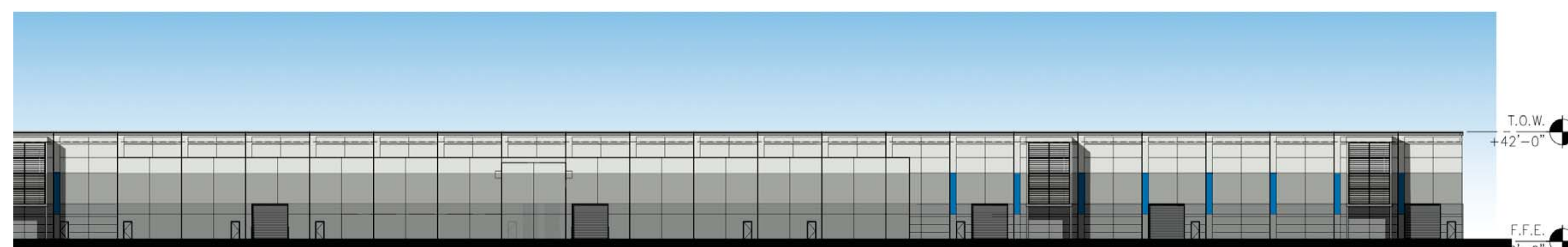


Key Plan

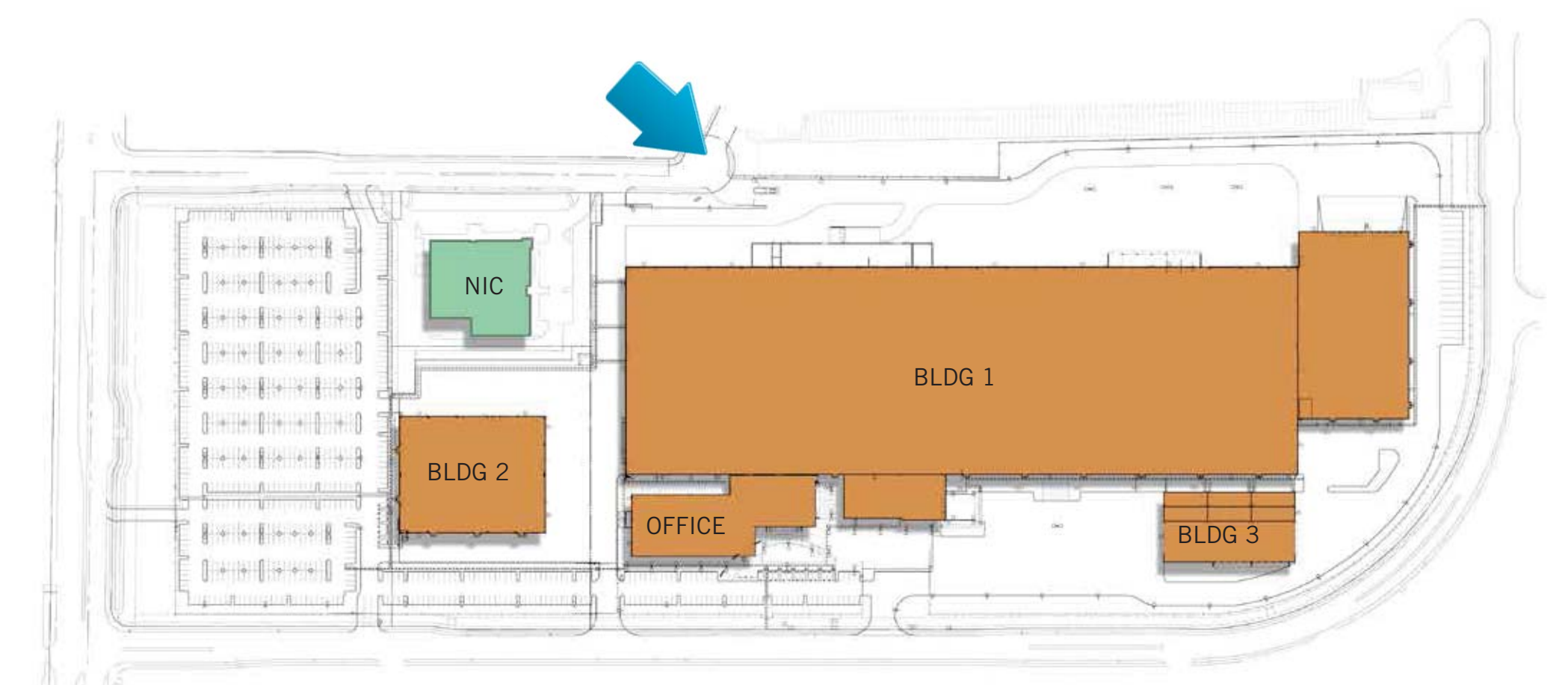


KEY NOTES

- 1 SECURITY GUARD BOOTH
- 2 CONCRETE BLOCK COLUMN
- 3 WROUGHT IRON FENCE
- 4 SCREEN WALL
- 5 TILT UP CONCRETE PANEL
- 6 OUTDOOR STORAGE AREA



Partial East Elevation



Key Plan

TRUCK ENTRY FROM VOYAGER CUL-DE-SAC

MANUFACTURING FACILITY AT OAKS BUSINESS PARK

WARE MALCOMB

SNR14-0029-00
12.12.2014

SHEET
8



Perspective - 1



Perspective - 2



Perspective - 3



Perspective - 4



Perspective - 5



Perspective - 6



Perspective - 7



Perspective - 8



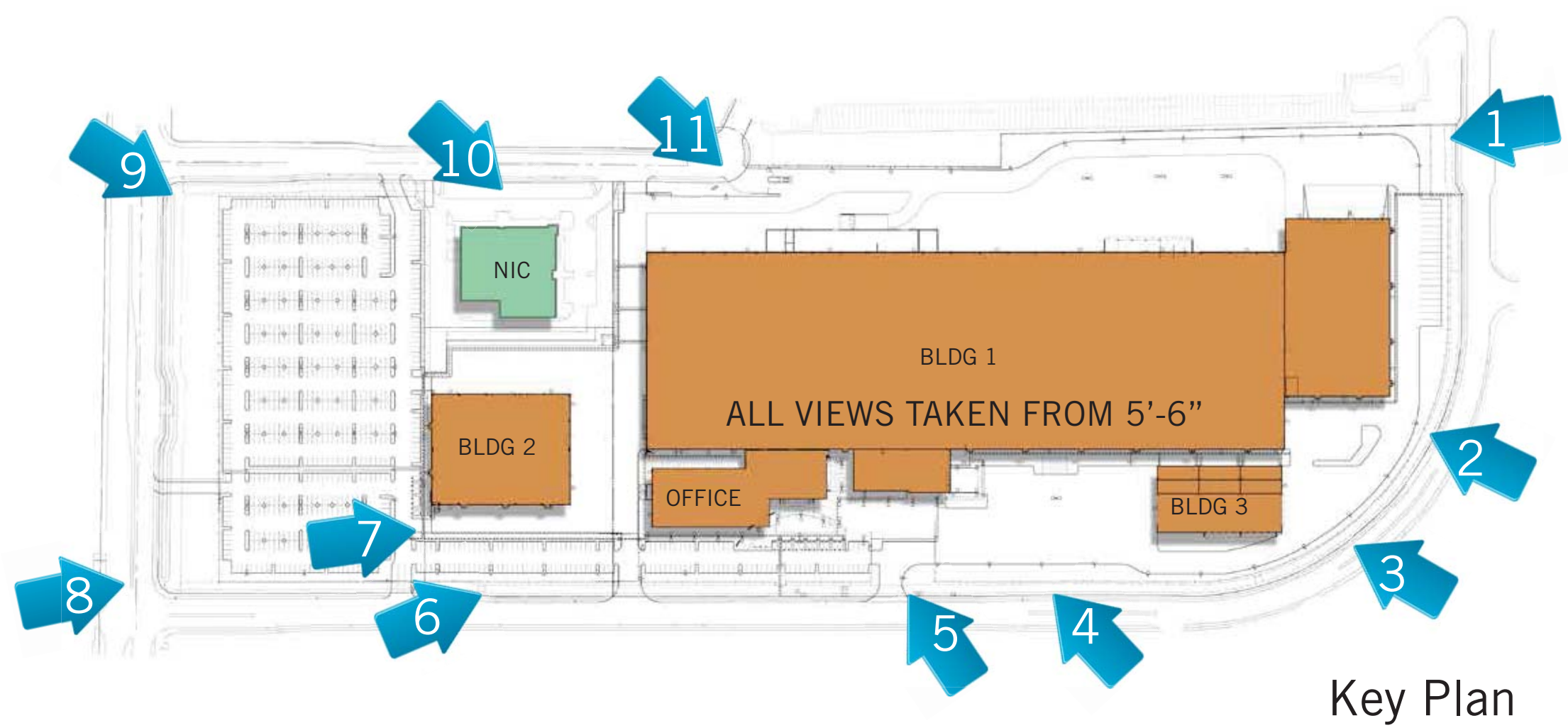
Perspective - 9



Perspective - 10



Perspective - 11



Key Plan

SITE PERSPECTIVES - VIEW FROM STREET

MANUFACTURING FACILITY AT OAKS BUSINESS PARK

WARE MALCOMB

SNR14-0029-00
12.12.2014

SHEET
9



Building 1 Screen Wall - Image 1.1



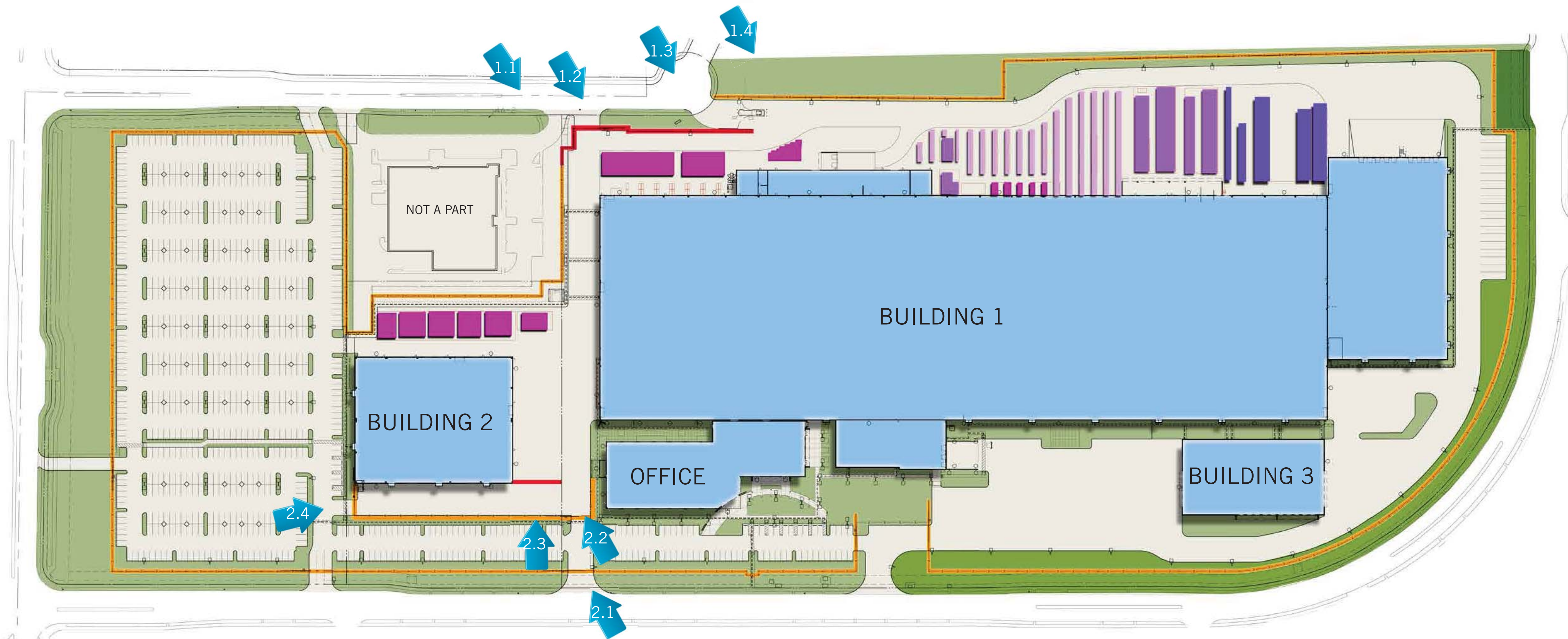
Building 1 Screen Wall - Image 1.2












Building 1 Screen Wall - Image 1.3



Building 1 Wrought Iron Fence - Image 1.4



COLOR LEGEND

	LANDSCAPE BERM +6FT		STORAGE RACKS 16'
	LANDSCAPE BERM +3FT		STORAGE RACKS 10'
	LANDSCAPE		STORAGE RACKS 8'
	WROUGHT IRON FENCE - 7'-0"		STORAGE RACKS 4'
	BLOCK SCREEN WALL - 8'-0"		



Building 2 Screen Wall - Image 2.1



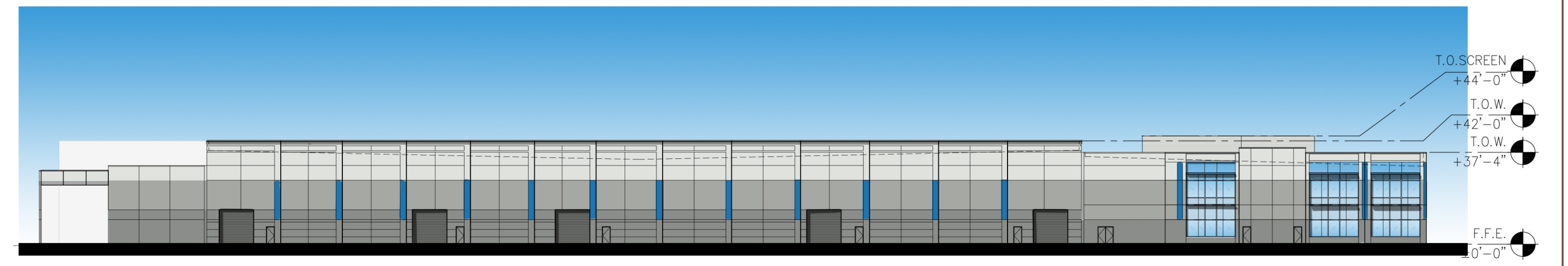
Building 2 Screen Wall - Image 2.2



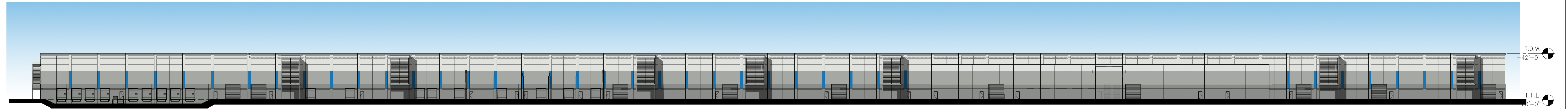
Building 2 Screen Wall - Image 2.3



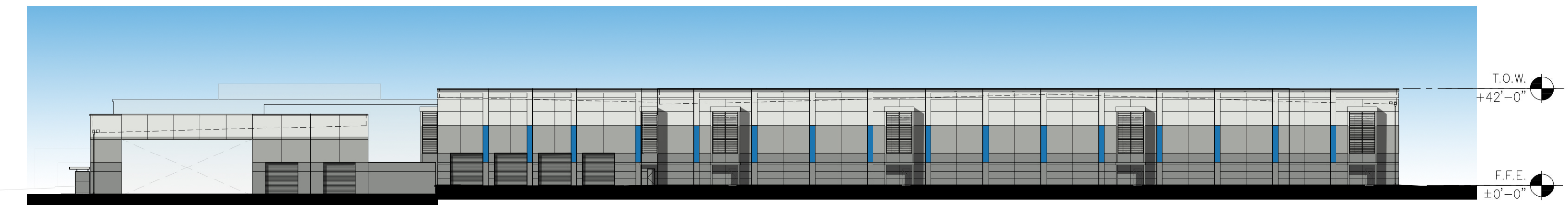
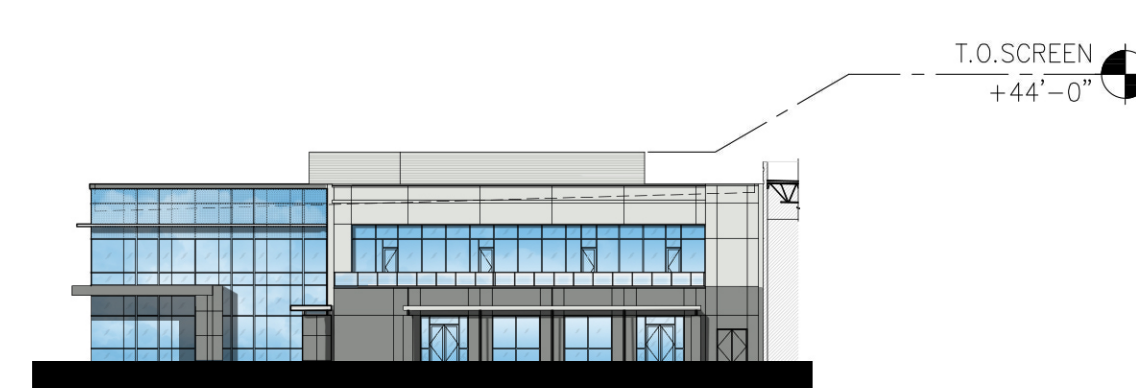
Building 2 Wrought Iron Fence - Image 2.4



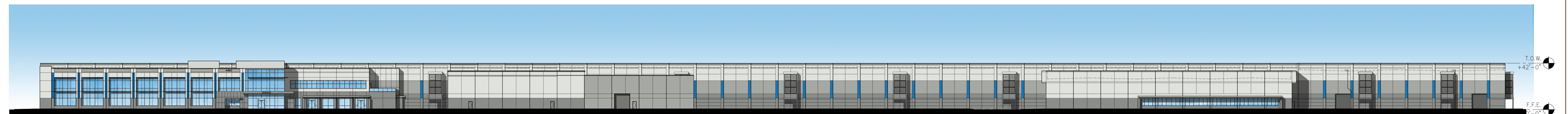
NORTH EXTERIOR ELEVATION - BUILDING 1
SCALE: 1"=40'-0" (A)



EAST EXTERIOR ELEVATION - BUILDING 1
SCALE: 1"=40'-0" (B)



SOUTH EXTERIOR ELEVATION - BUILDING 1
SCALE: 1"=40'-0" (C)



WEST EXTERIOR ELEVATION - BUILDING 1
SCALE: 1"=40'-0" (D)

ELEVATION NOTES

- | | |
|---|--|
| 1 SECTIONAL DOCK HIGH DOOR, 9'-0" X 10'-0" | 12 3/4" V-REVEAL |
| 2 SECTIONAL GRADE LEVEL DOOR | 13 METAL STAIR EGRESS |
| 3 HOLLOW METAL DOOR | 14 POP-UP FACADE ELEMENT |
| 4 ALUMINUM STOREFRONT SYSTEM | 15 FINISH GRADE VARIES, SEE CIVIL DWGS. |
| 5 WALL LIGHT MOUNTED @ 30'-0" A.F.F. | 16 METAL CANOPY |
| 6 ALUMINUM PARAPET CAP | 17 BUILDING SIGNAGE UNDER SEPARATE PERMIT. |
| 7 ROOF LINE BEYOND | 18 COVERED ENTRY FEATURE WALL |
| 8 TILT-UP CONCRETE PANEL | 19 EYEBROW SUNSHADE, SEE DETAIL 6/A8.1 |
| 9 INTERNAL ROOF DRAINS | |
| 10 BUILDING ADDRESS LOCATION TO COMPLY W/LOCAL CITY ORDINANCE | |
| 11 CONCRETE TILT-UP PANEL JOINT | |

COLOR LEGEND

- | | |
|---|---|
| A | BASE COLOR - SHERWIN WILLIAMS NEBULOUS WHITE / SW7063 |
| B | SECONDARY COLOR - SHERWIN WILLIAMS GRAY MATTERS / SW7066 |
| C | ACCENT COLOR - "MANUFACTURING FACILITY @ OAKS BUSINESS PARK" BLUE |
| D | WAINSCOT COLOR - SHERWIN WILLIAMS CITYSCAPE / SW7067 |

LEGEND

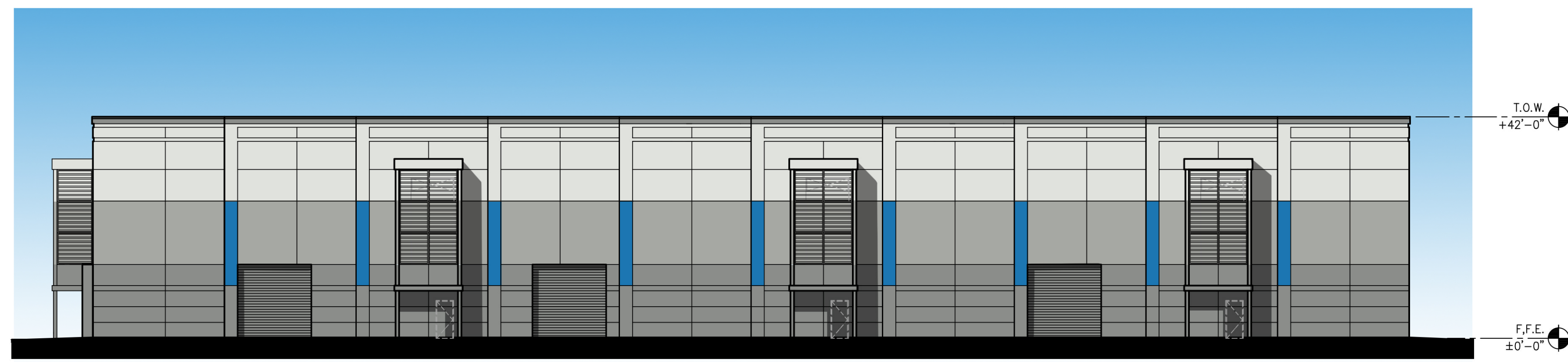
- | | |
|--|--|
| | VISION GLASS - PPG VISTACOL AZURIA, SUNGUARD, (SINGLE GLAZING CLERESTORY LITES ONLY) |
| | SPANDELL GLASS - ICD HIGH PERFORMANCE 3-0770 WARM GRAY. |
| | WALL PACK LIGHT FIXTURE, REFER TO PHOTOMETRIC DRAWING |

1"=40'
PRELIMINARY BUILDING 1 - EXTERIOR ELEVATIONS
0 20 40 80 200
Manufacturing Facility, Oaks Business Park

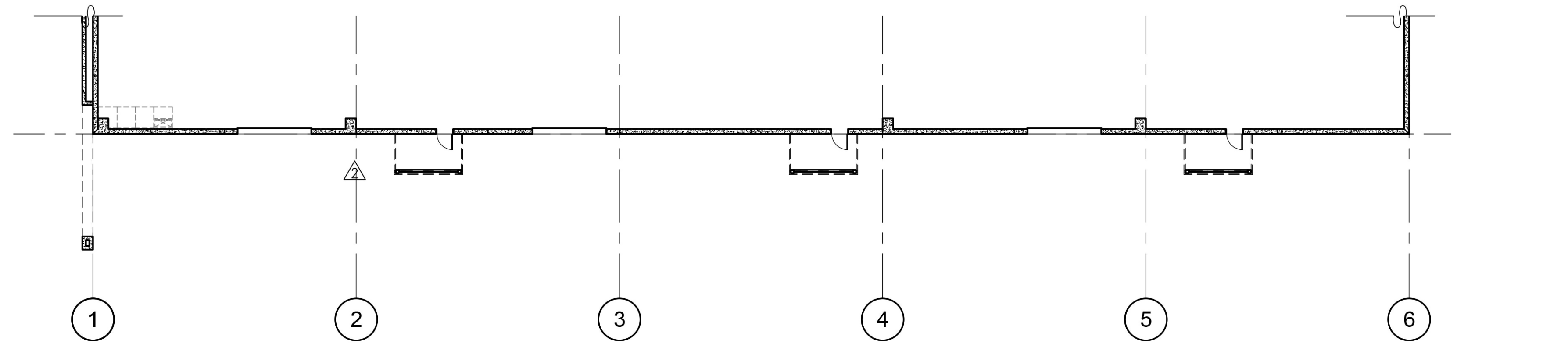
WARE MALCOMB

SNR14-0029-00
12.08.2014

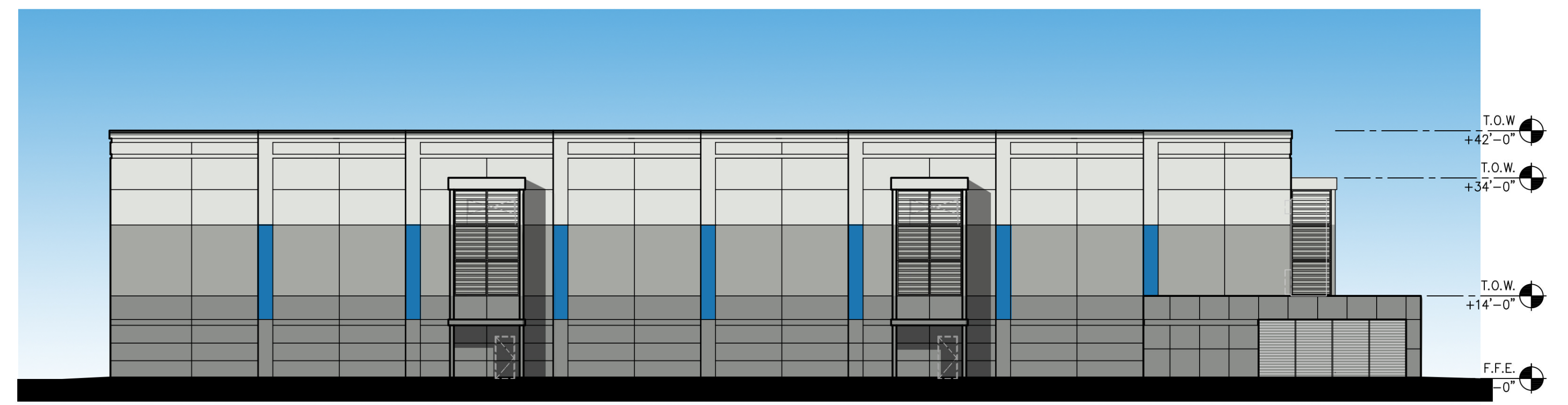
SHEET
A4.2A



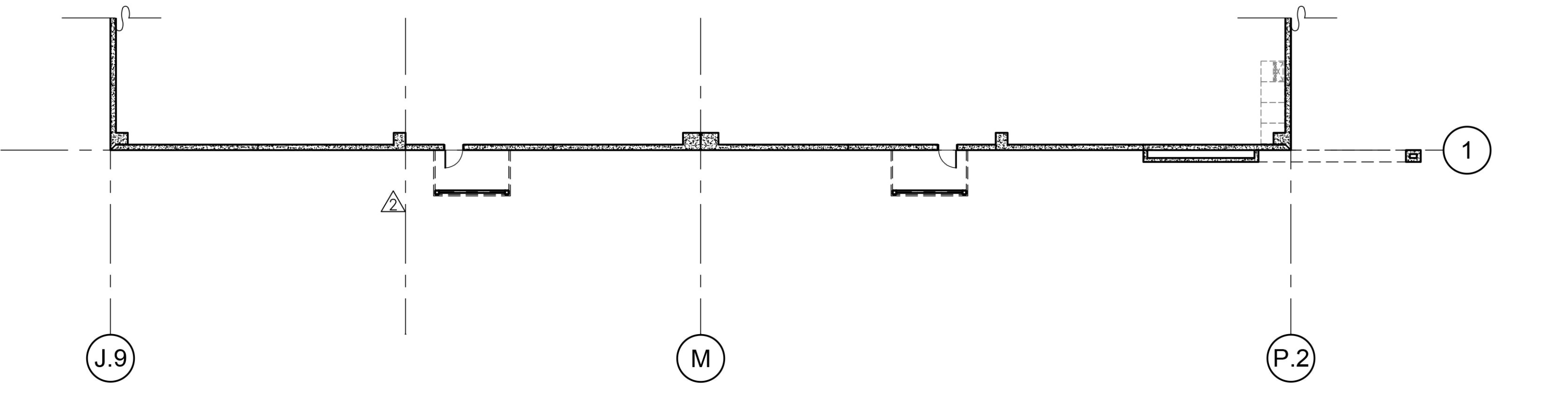
WEST EXTERIOR ELEVATION - BUILDING 2
SCALE: 1/16" = 1'-0" 5



FLOOR PLAN
SCALE: 1/16" = 1'-0" 6



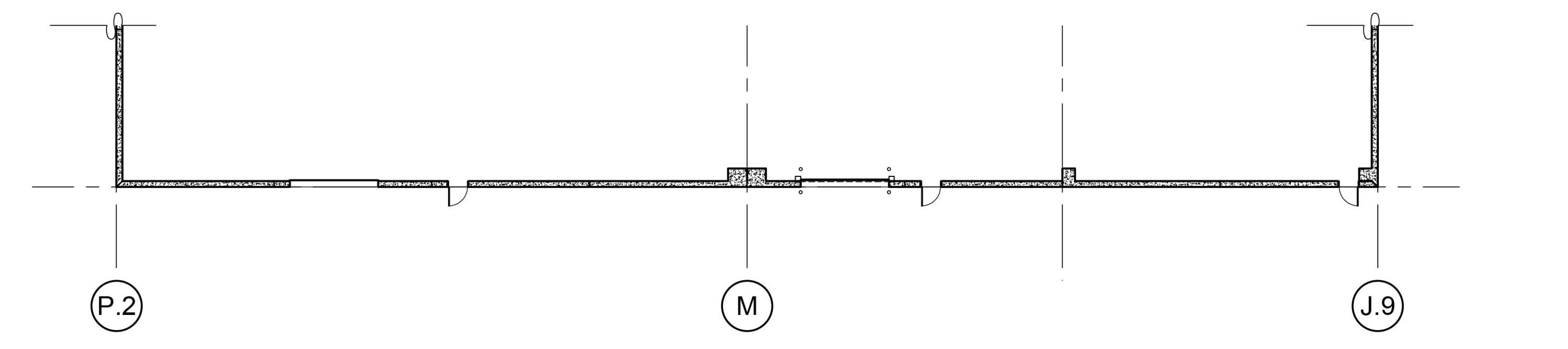
NORTH EXTERIOR ELEVATION - BUILDING 2
SCALE: 1/16" = 1'-0" 1



FLOOR PLAN
SCALE: 1/16" = 1'-0" 2



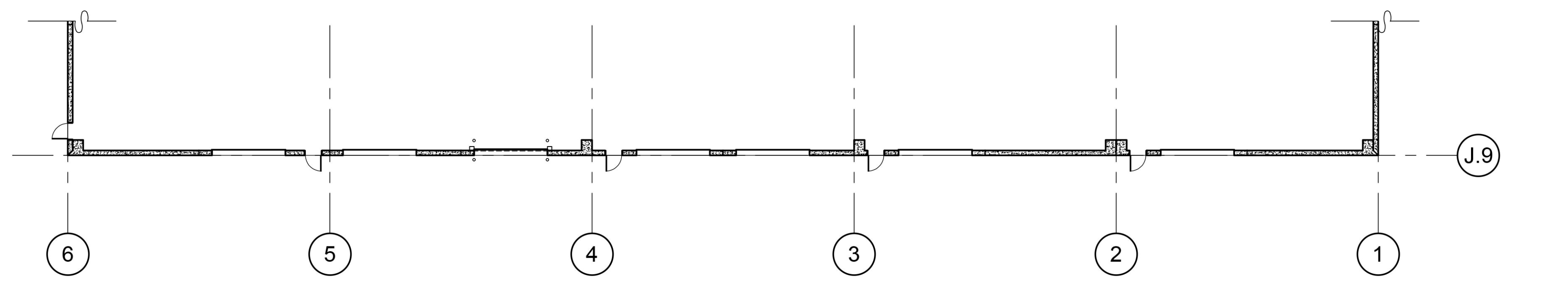
SOUTH EXTERIOR ELEVATION - BUILDING 2
SCALE: 1/16" = 1'-0" 7



FLOOR PLAN
SCALE: 1/16" = 1'-0" 8



EAST EXTERIOR ELEVATION - BUILDING 2
SCALE: 1/16" = 1'-0" 3



FLOOR PLAN
SCALE: 1/16" = 1'-0" 4

ELEVATION NOTES

- | | |
|---|--|
| 1 SECTIONAL DOCK HIGH DOOR, 9'-0" X 10'-0" | 12 3/4" V-REVEAL |
| 2 SECTIONAL GRADE LEVEL DOOR | 13 METAL STAIR EGRESS |
| 3 HOLLOW METAL DOOR | 14 POP-UP FACADE ELEMENT |
| 4 ALUMINUM STOREFRONT SYSTEM | 15 FINISH GRADE VARIES, SEE CIVIL DWGS. |
| 5 WALL LIGHT MOUNTED @ 30'-0" A.F.F. | 16 METAL CANOPY |
| 6 ALUMINUM PARAPET CAP | 17 BUILDING SIGNAGE UNDER SEPARATE PERMIT. |
| 7 ROOF LINE BEYOND | 18 COVERED ENTRY FEATURE WALL |
| 8 TILT-UP CONCRETE PANEL | 19 EYEBROW SUNSHADE, SEE DETAIL 6/A&1 |
| 9 INTERNAL ROOF DRAINS | |
| 10 BUILDING ADDRESS LOCATION TO COMPLY W/LOCAL CITY ORDINANCE | |
| 11 CONCRETE TILT-UP PANEL JOINT | |

COLOR LEGEND

- | | |
|---|---|
| A | BASE COLOR-SHERWIN WILLIAMS NEBULOUS WHITE / SW7063 |
| B | SECONDARY COLOR- SHERWIN WILLIAMS GRAY MATTERS / SW7066 |
| C | ACCENT COLOR - "MANUFACTURING FACILITY @ OAKS BUSINESS PARK" BLUE |
| D | WAINSCOT COLOR - SHERWIN WILLIAMS CITYSCAPE / SW7067 |

LEGEND

- | | |
|--|--|
| | VISION GLASS - PPG VISTACOL AZURIA, SUNGUARD, (SINGLE GLAZING CLERESTORY LITES ONLY) |
| | SPANDREL GLASS - ICD HIGH PERFORMANCE 3-0770 WARM GRAY. |
| | WALL PACK LIGHT FIXTURE, REFER TO PHOTOMETRIC DRAWING |